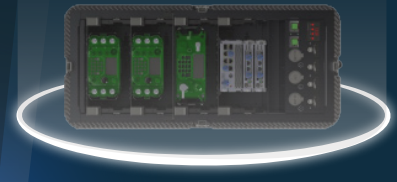
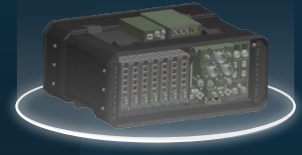
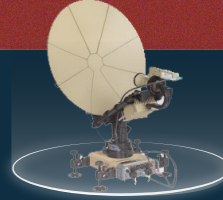




# TERMINUS

ACCELERATE YOUR NODE SETUP AND MANAGEMENT.



TERMINUS HELPS YOU GET YOUR NODE UP AND RUNNING, ALL FROM ONE INTUITIVE USER INTERFACE.

## INTUITIVE USER INTERFACE

Designed for edge users by a dedicated team of experienced UX professionals and veterans. Anyone can easily navigate the Material UI compliant user interface to visualize important data and execute objectives at speed.

## MONITOR AND MANAGE CONFIGURATIONS

Multiple, authenticated users can access and manage Terminus at the same time. Compare baseline and incoming configurations to easily reconcile differences.

## INFORMATION AT THE SPEED OF RELEVANCE

Visualize the status and health of your connected devices. Vertical and horizontal information flows provide necessary data to decision makers at all echelons in real-time.

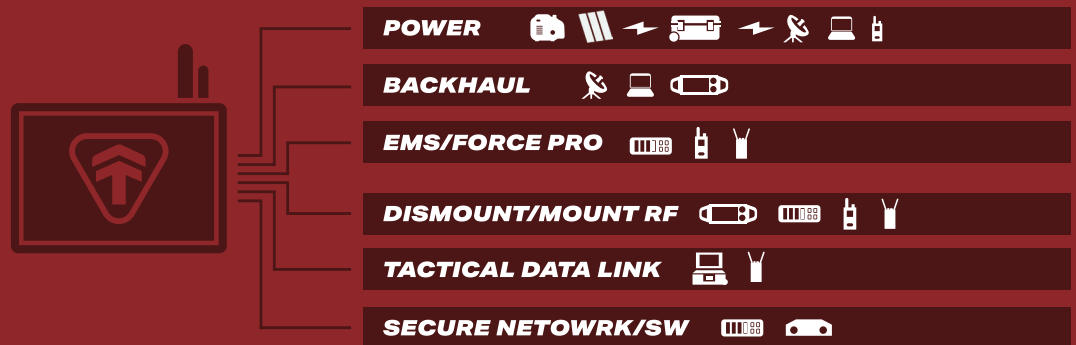
## AUTOMATION & ORCHESTRATION

Combine all required functionality and NetOps data at a node into a single interface, eliminating extraneous tools and training. Execute operational tasks in seconds with repeatability, consistency, and predictability.



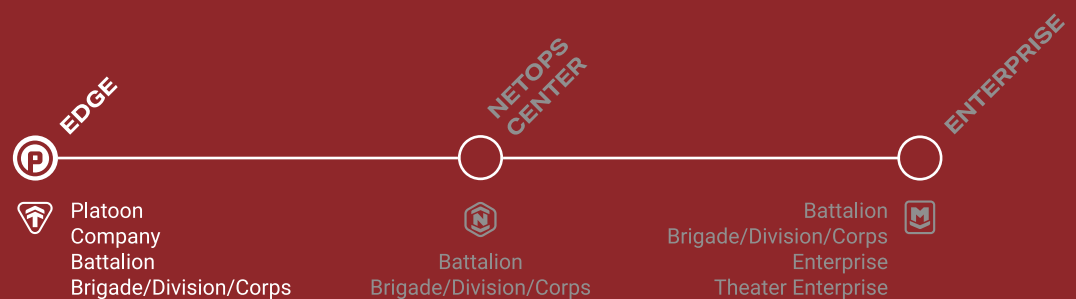


## One Software Interface for Any Hardware Configuration



## Enhance Your NetOps Capabilities

Terminus is part of our interoperable software solutions for unified netops. Use Terminus on its own or with other CodeMettle products. Report status up to Nexus and Meridian for increased situational awareness. Terminus utilizes Pulse to help control, prioritize, and route data in the most challenging environments.



## System Requirements

<b>Memory</b>	8 GB (minimum); 16GB (recommended)
<b>CPU</b>	4 Cores (minimum); 16 Cores (recommended)
<b>Disk Space</b>	50GB (SSD recommended)
<b>OS</b>	Linux (RHEL8+ or equivalent) Windows (Windows 10+ or Windows Server 2016+) Docker/Container



CodeMettle was established in 2009 to simplify the management of the most complex networks. Our intuitive software products consolidate fragmented data, processes, and operations into one common operating picture.

[sales@codemettle.com](mailto:sales@codemettle.com)